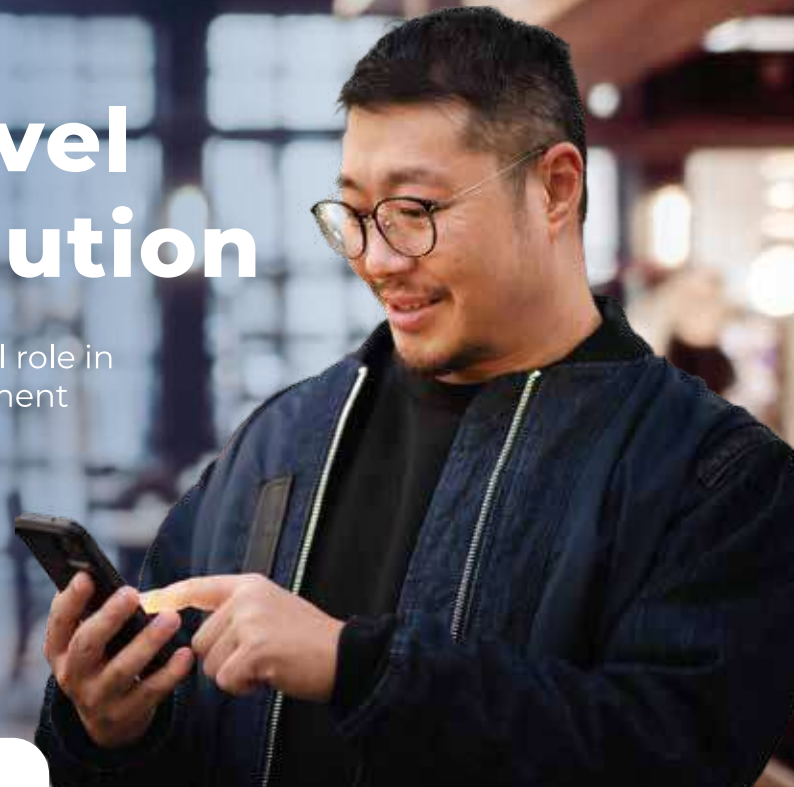


Smart Tank Level Monitoring Solution

Tank level monitoring solutions play a pivotal role in industries where precise inventory management and operational efficiency are paramount.

Let's dive in and explore how Browan can streamline your day-to-day operations, making them more effortless and highly efficient.



Challenges of Existing Method



Manual Data Collection



Limited Visibility and Control



Supply Chain Disruptions

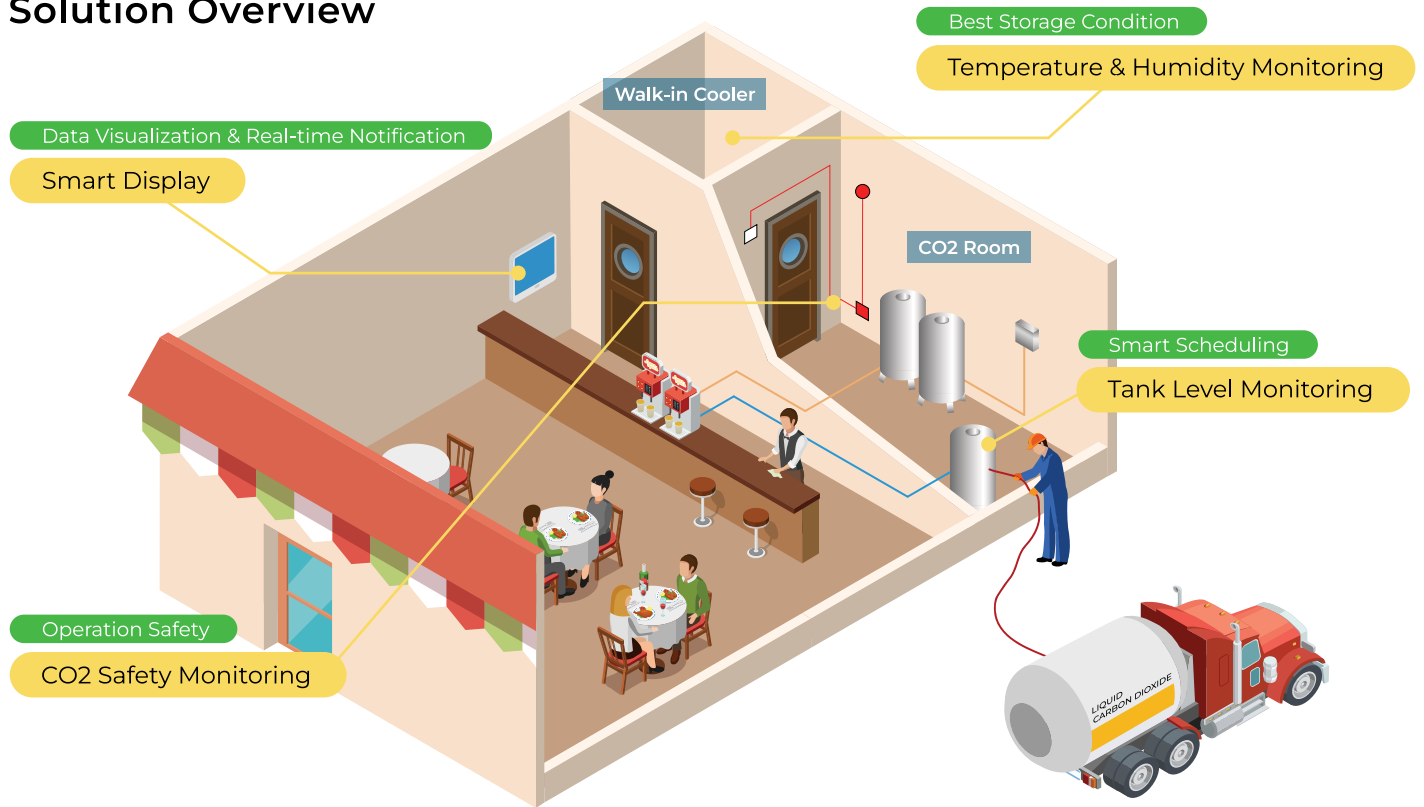


High Operation Cost

Here's a solution for you...



Solution Overview



Tank Level Monitoring

- **Smart Scheduling**
Farewell to lengthy delivery waits! With our tank level monitoring solutions, you'll receive timely refills long before you realize your tank is nearing empty.
- **Prevent Stockouts**
Receive alerts promptly for low tank levels to prevent operational disruptions caused by stock shortages.

CO2 Safety Monitoring

- **Clear Visual Status Updates and Alarms**
Provide a safe working environment.
- **Regulatory Compliance**
Continuous monitoring ensures compliance with safety regulations and guidelines.

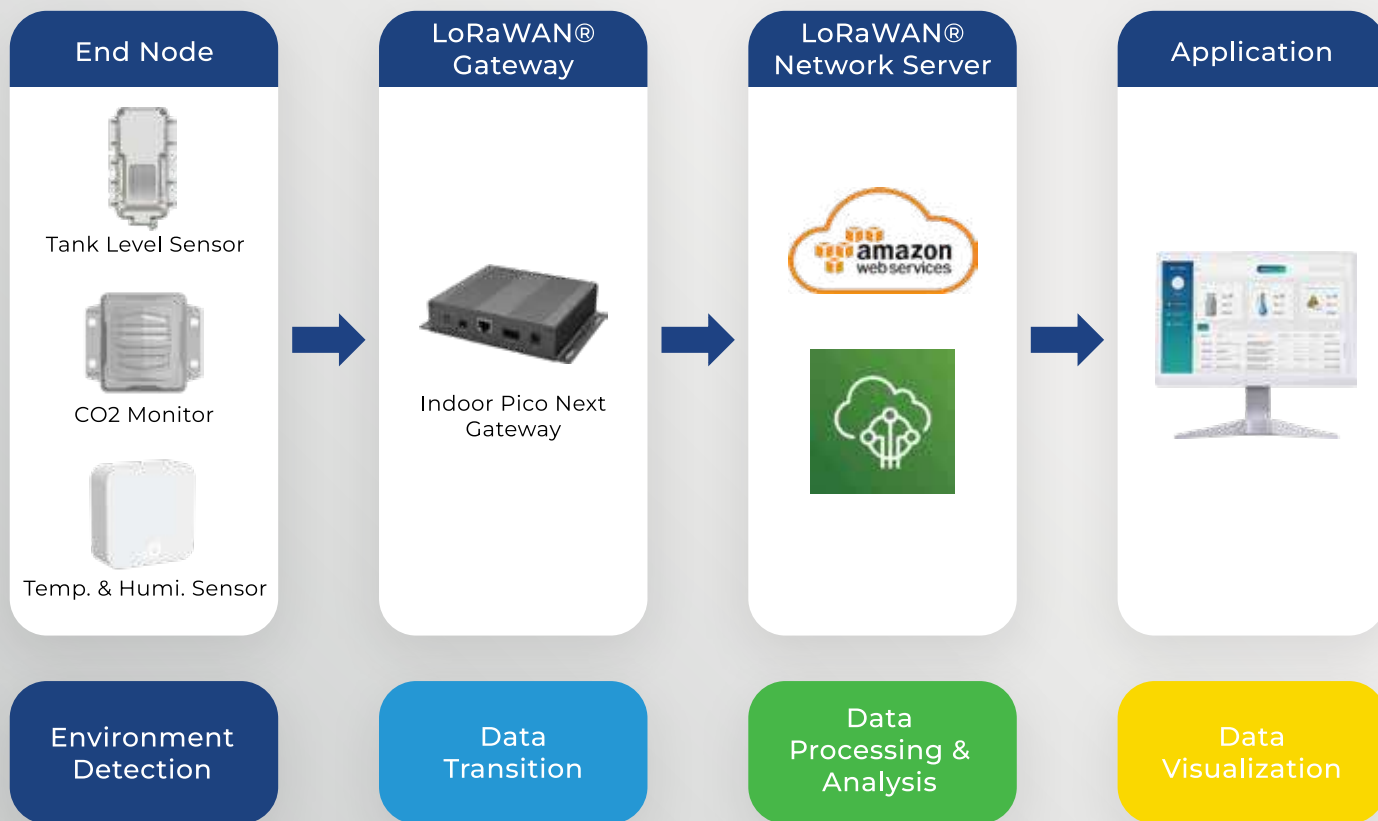
Cooler Monitoring

- **Best Storage Condition**
Forget manual checks: our solution keeps an eye on your Stock 24/7.
- **Maintenance Optimization**
Identify potential equipment issues early through continuous monitoring of cooler conditions, enabling proactive maintenance to prevent costly breakdowns and downtime.

Smart Display

- **Real-Time Alerts**
Stay informed whenever something goes wrong, ensure your inventory stays safe and secure.
- **Streamline Store Management**
Eliminate the need for continuous checks to ensure everything is running smoothly.

Solution Architecture



LoRaWAN® is a mark used under license from the LoRa Alliance®.

Featured Products



Tank Level Sensor

- Measuring options:
 - Works with Roto-Cal & Roto-Tel
 - Works with Analog output: 4-20 mA, 0-5 V
- Band: US915/EU868
- Size: 171 x 57 x 99 mm
- Weight: 418 g
- Cable length: 1000 mm
- Battery: 3.6V D type Lithium, 19000 mAh
- Battery life: 5 years+
- Ingress Protection: IP66
- Operating Temp.: -30~50°C

CO2 Monitor

- Input: RS485 Modbus via RJ45 connector
- Band: US915/EU868
- Size: 102x86x48 mm
- Cable length: 1000 mm
- Power over Ethernet
- Ingress Protection: IP65
- Operating Temp.: -30~50°C



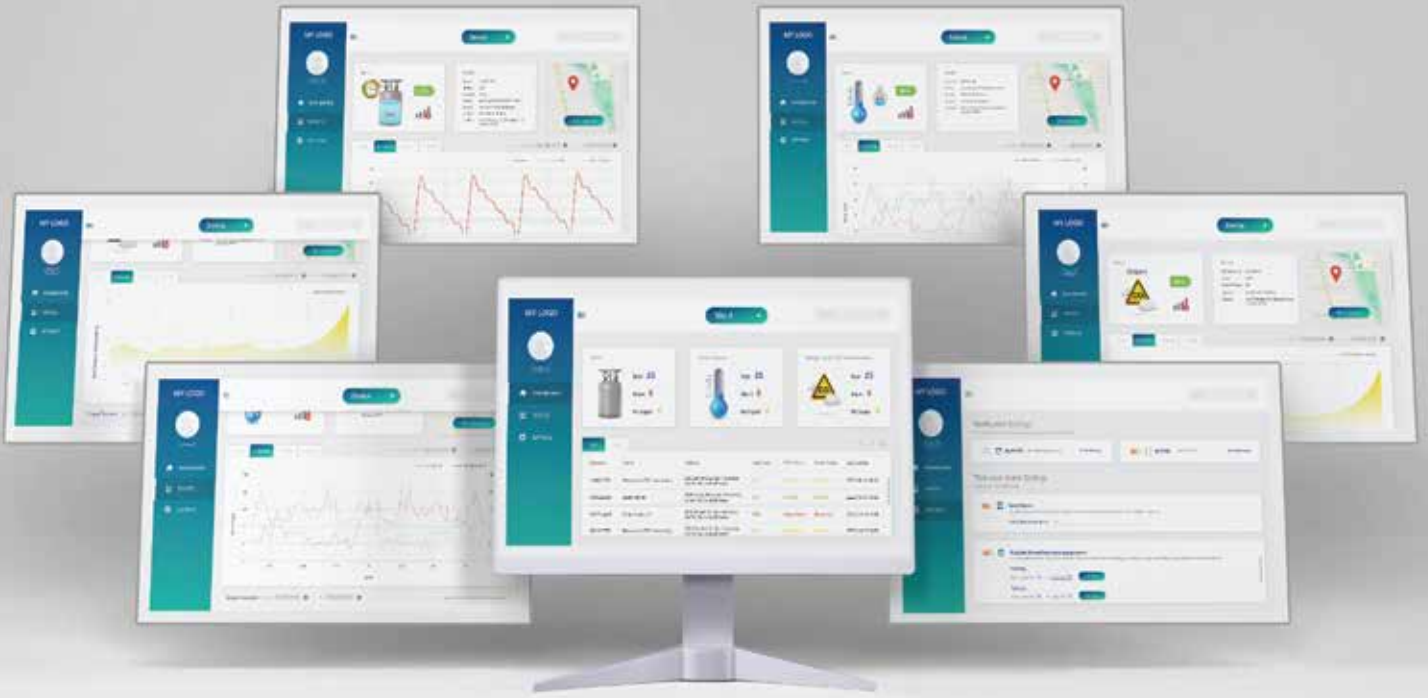
Indoor Pico Next Gateway

- Frequency Band:
 - LoRa: US915/EU868
 - Wi-Fi: 802.11b/g/n
 - LTE: EU/US
- Size: 120 x 136 x 35 mm
- Weight: 450 g
- Power options:
 - DC 10~30 V 3-pin connector
 - DC 12V/1.5A power adaptor
 - 10~30V Passive PoE
- Ingress Protection: IP30
- Operating Temp.: -10~55°C

Temperature & Humidity Sensor

- Band: US915/EU868
- Size: 70 x 25 x 70 mm
- Weight: 91 g
- Battery: 1.5V AA Alkaline x 2pcs, 2700 mAh(ea.)
- Battery life: 3 years+
- Ingress Protection: IP40
- Operating Temp.: 0~50°C
- Temperature accuracy: ± (0.1°C)
- Humidity accuracy: ± 1.5 %
- Temper detection

Operational Excellence Portal



Benefits for Customers



Improve inventory management and reduce stockouts.



Minimize operational costs and prevent wastage.



Enhance workplace safety and compliance with regulatory requirements.

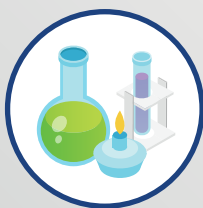


Increase overall productivity and profitability.

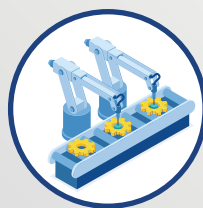
Industries Served



Food & Beverage



Chemical Processing



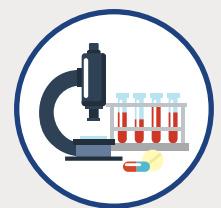
Manufacturing



Agriculture



Health Care



Pharmaceuticals

And more...